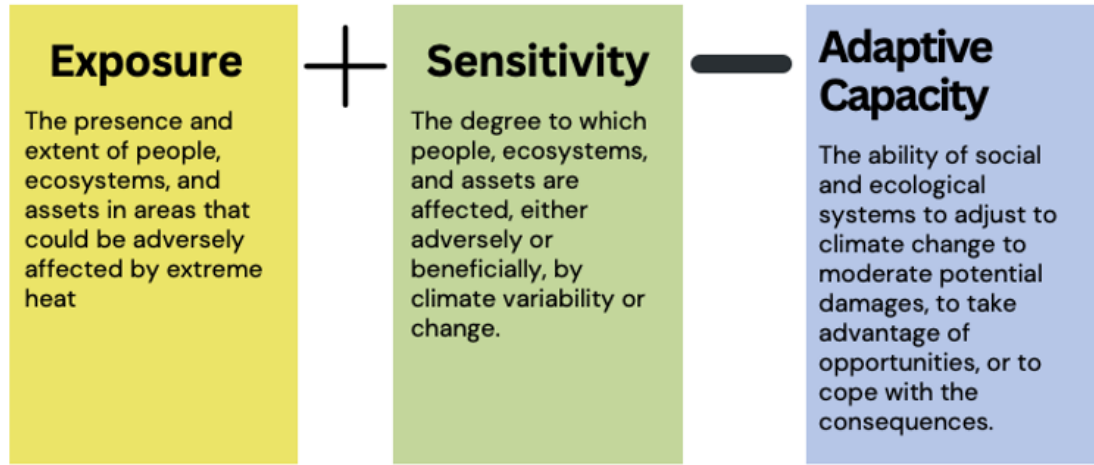


# Urban Heat Vulnerability Assessment Heat Action Plan for Jodhpur North

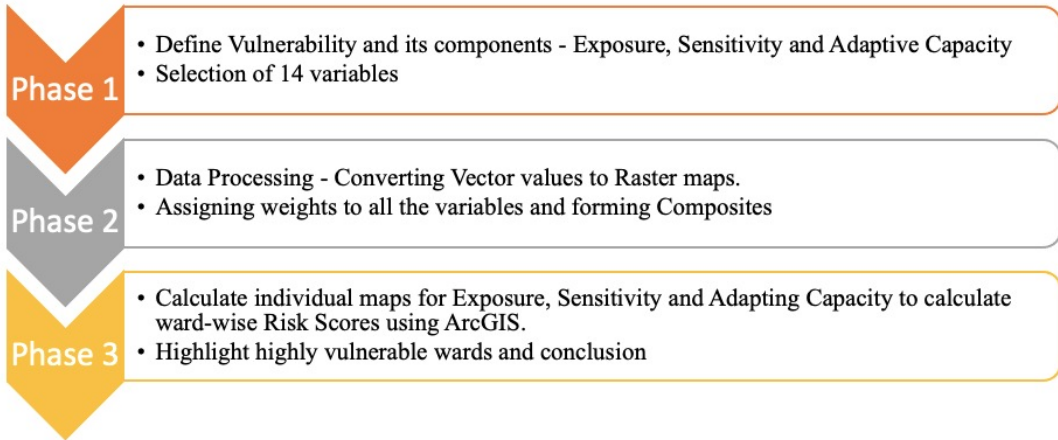


# Heat Vulnerability Assessment

Conceptually, urban heat vulnerability is the product of three latent factors

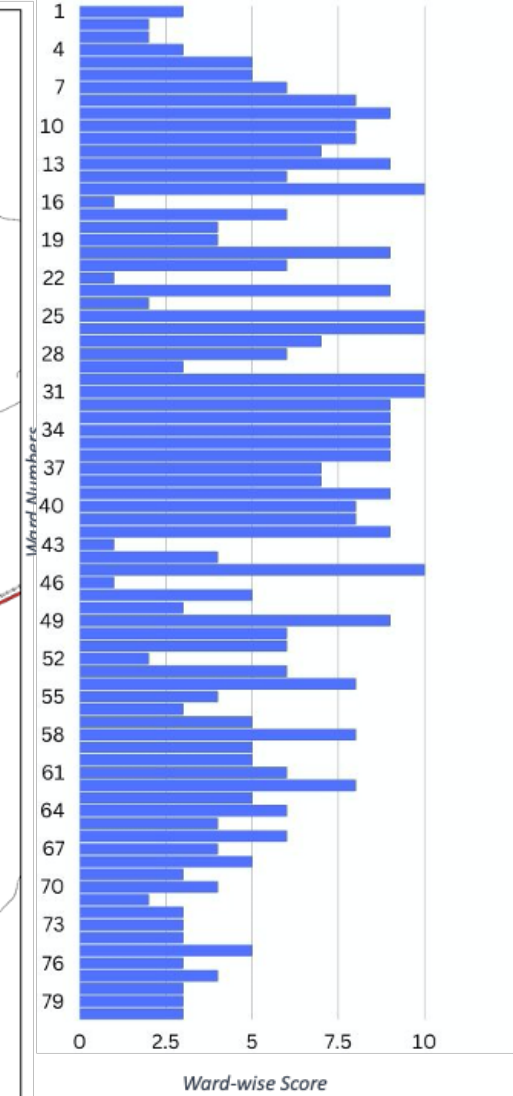
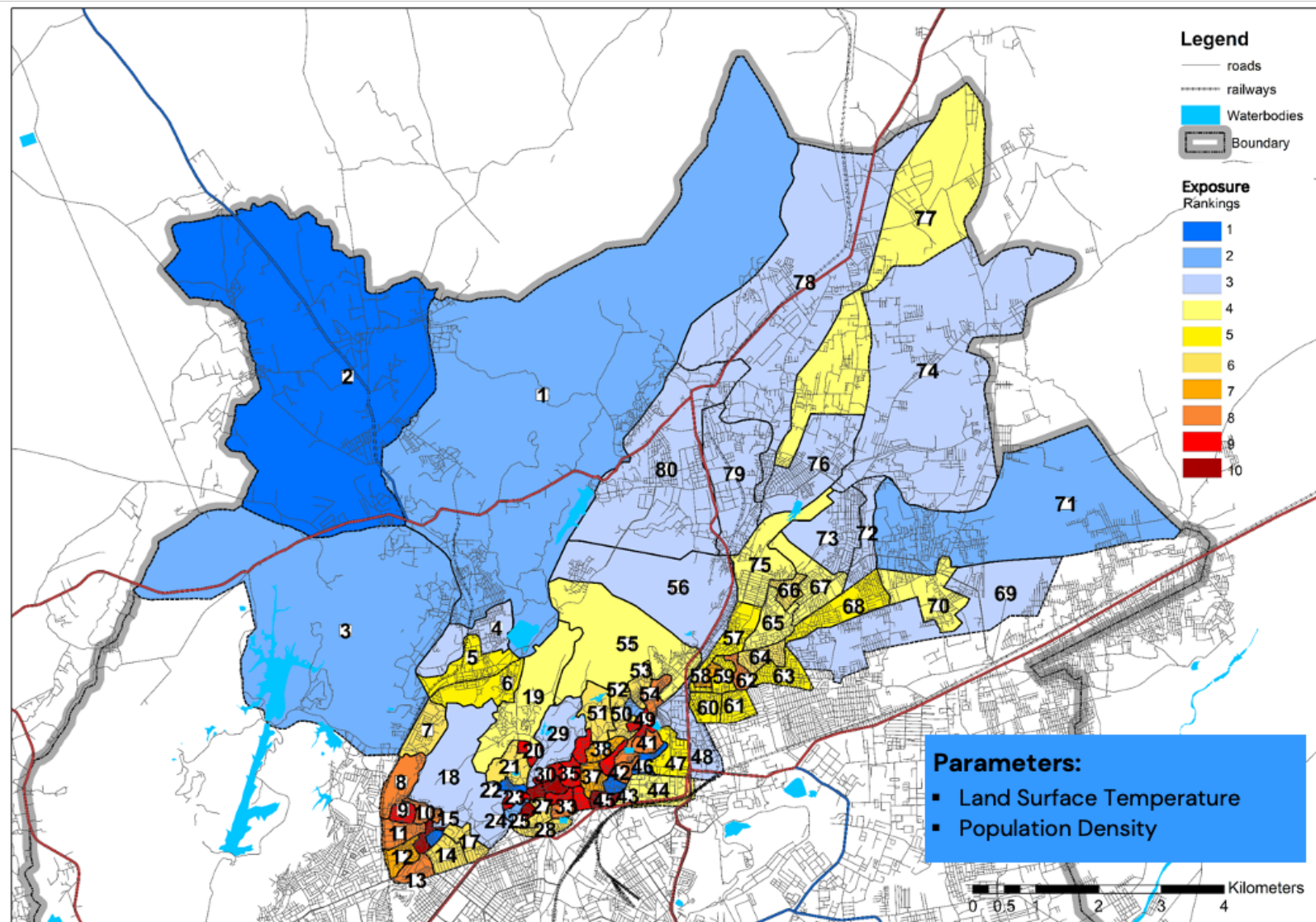


Source: IPCC (2014)

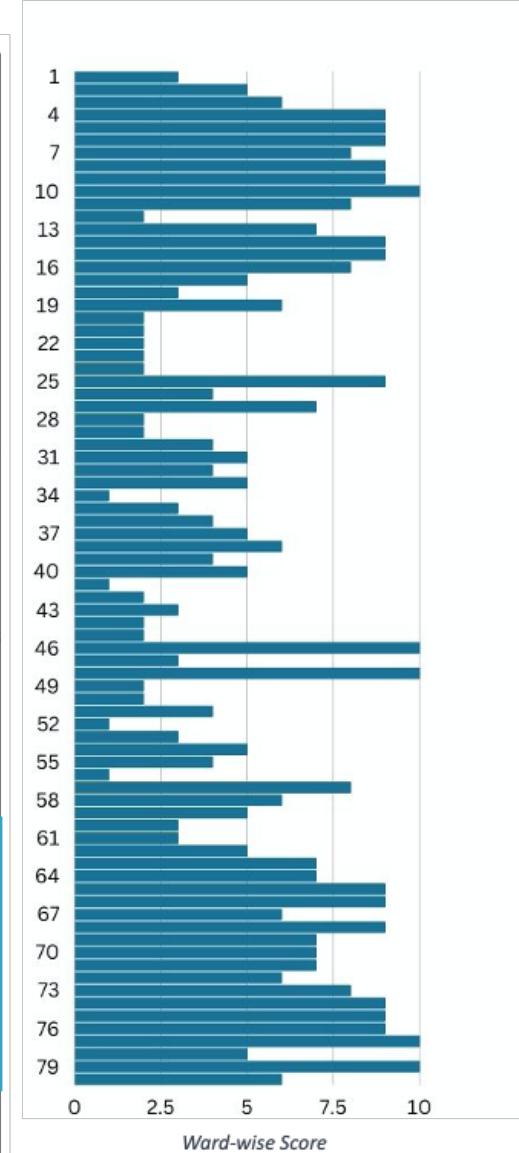
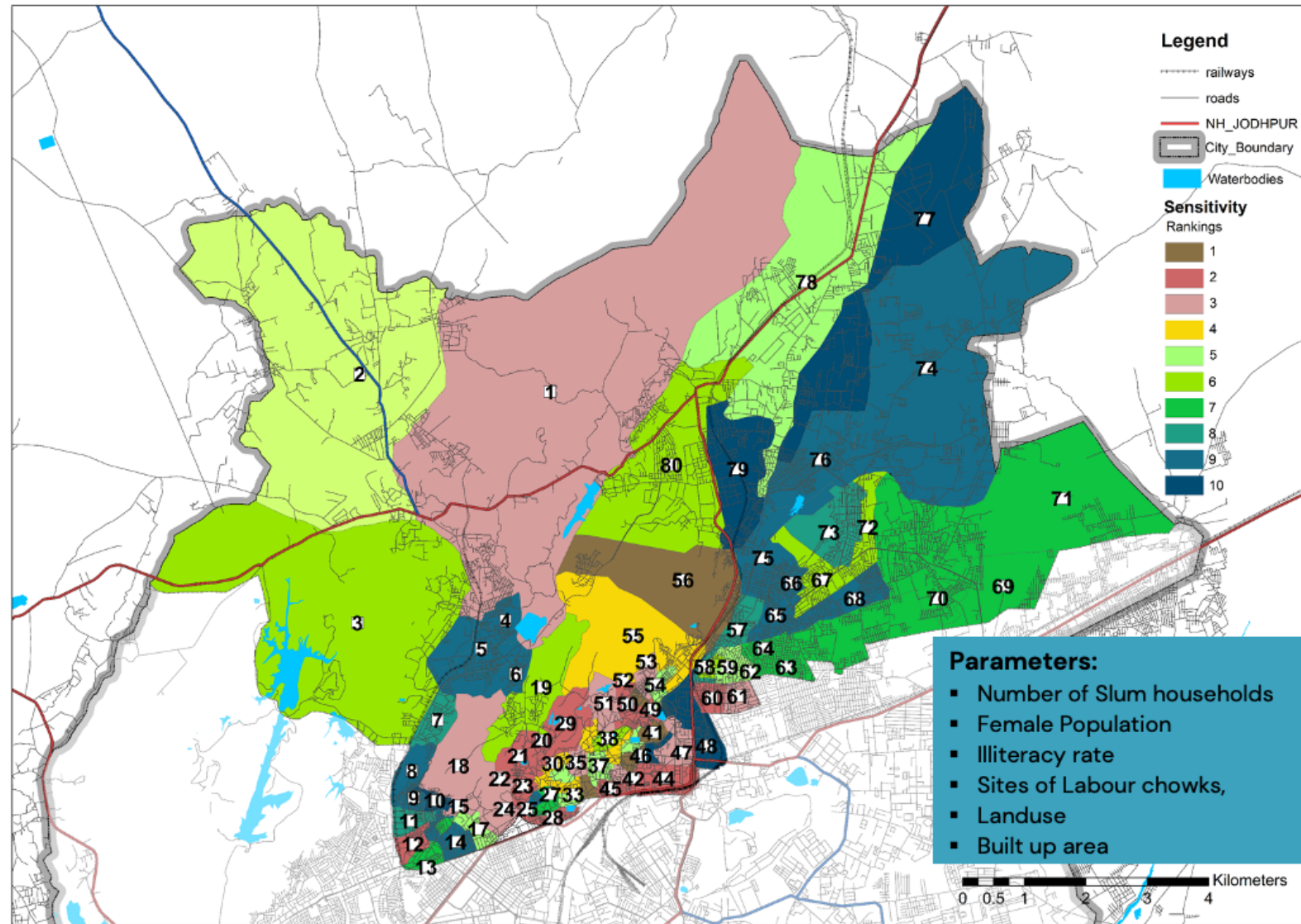


Parameters	
<b>Exposure</b>	<ul style="list-style-type: none"> <li>Land Surface Temperature</li> <li>Population Density</li> </ul>
<b>Sensitivity</b>	<ul style="list-style-type: none"> <li>Number of Slum households</li> <li>Female Population</li> <li>Illiteracy rate</li> <li>Sites of Labor Chowks</li> <li>Landuse</li> <li>Built up area</li> </ul>
<b>Adaptive Capacity</b>	<ul style="list-style-type: none"> <li>Access to Parks</li> <li>Access to Urban Health Centers</li> <li>Access to Waterbodies, emphasizing traditional structures Baoris</li> <li>Water Index</li> <li>Vegetation Index</li> <li>Road Density</li> </ul>

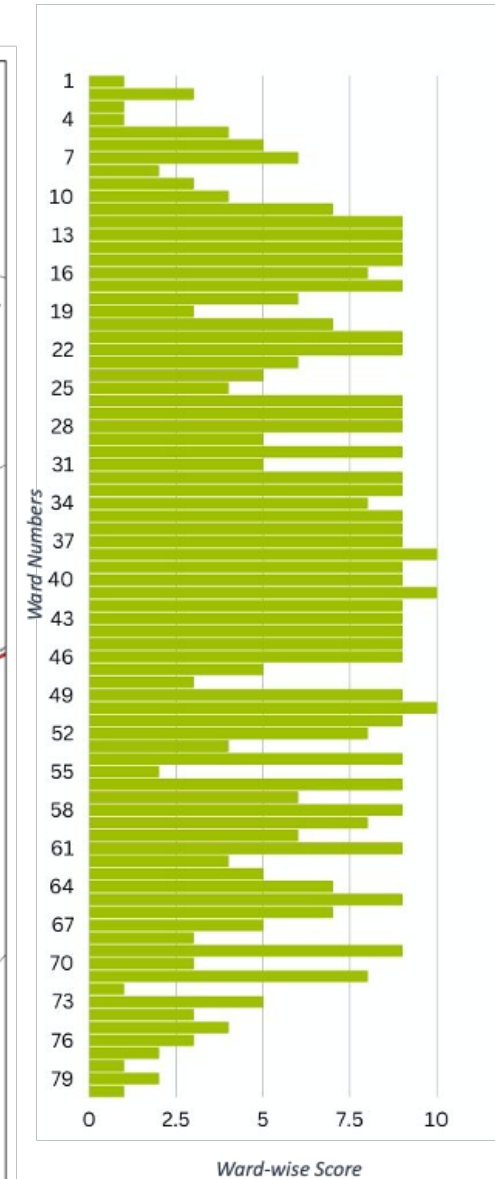
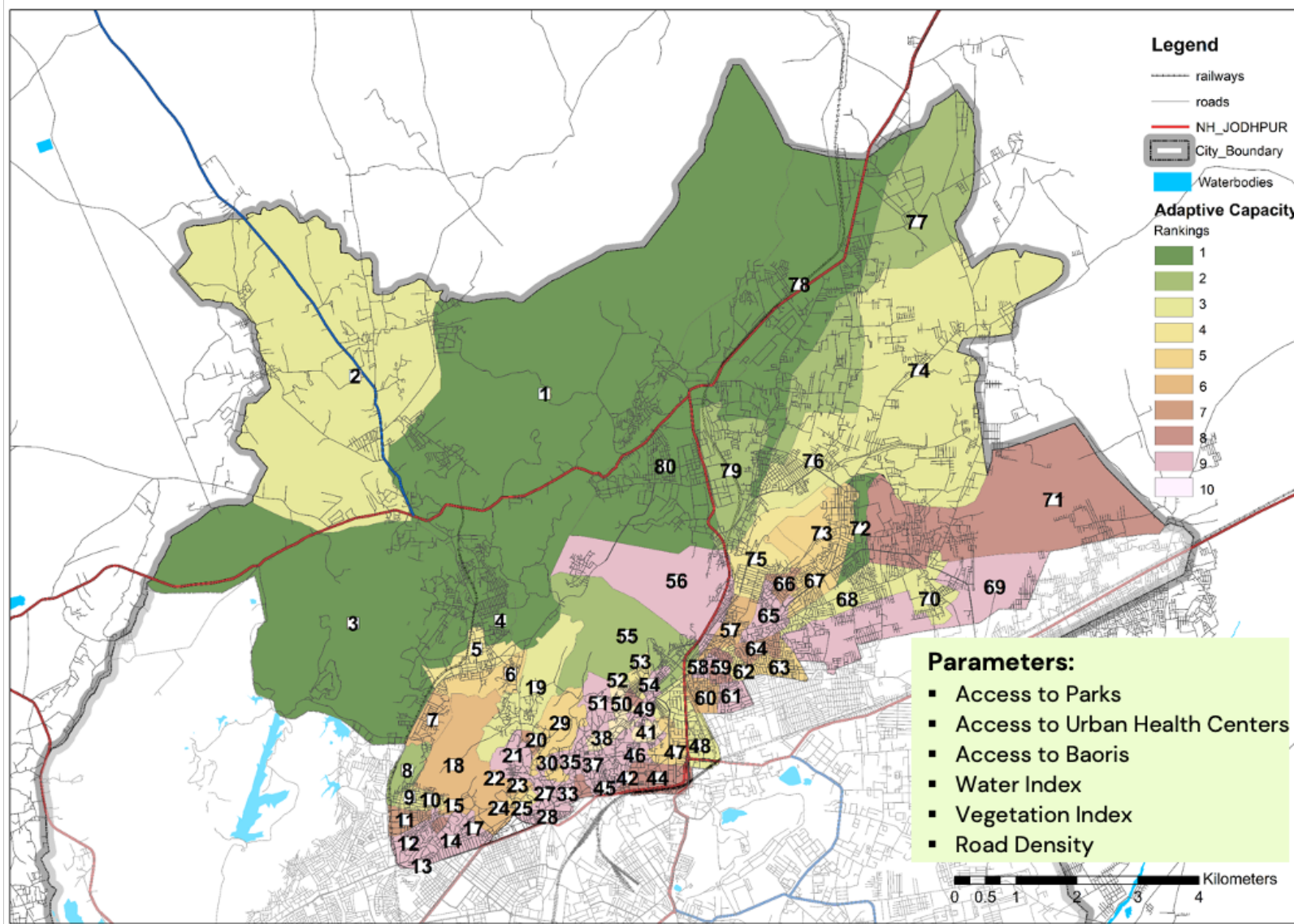
# Exposure



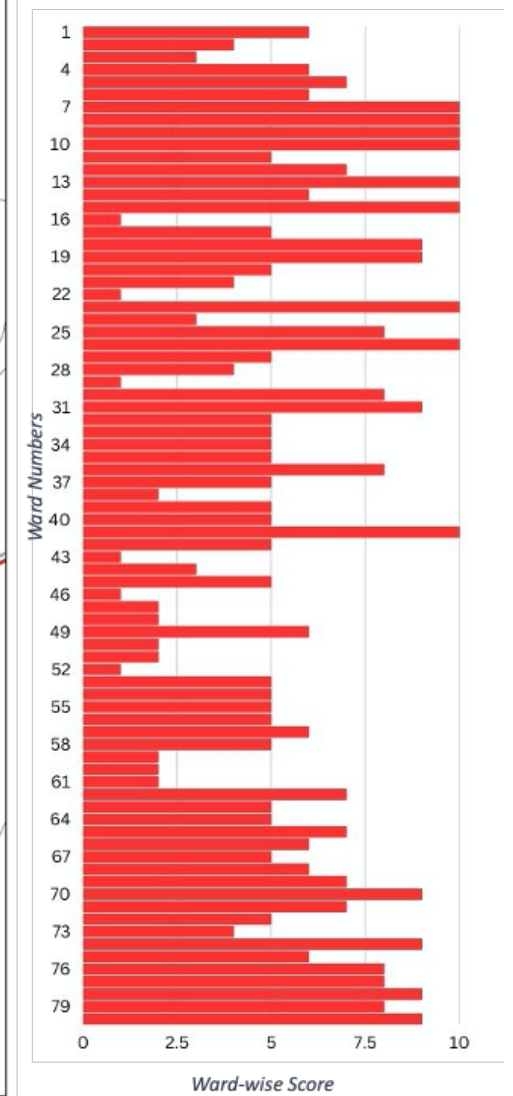
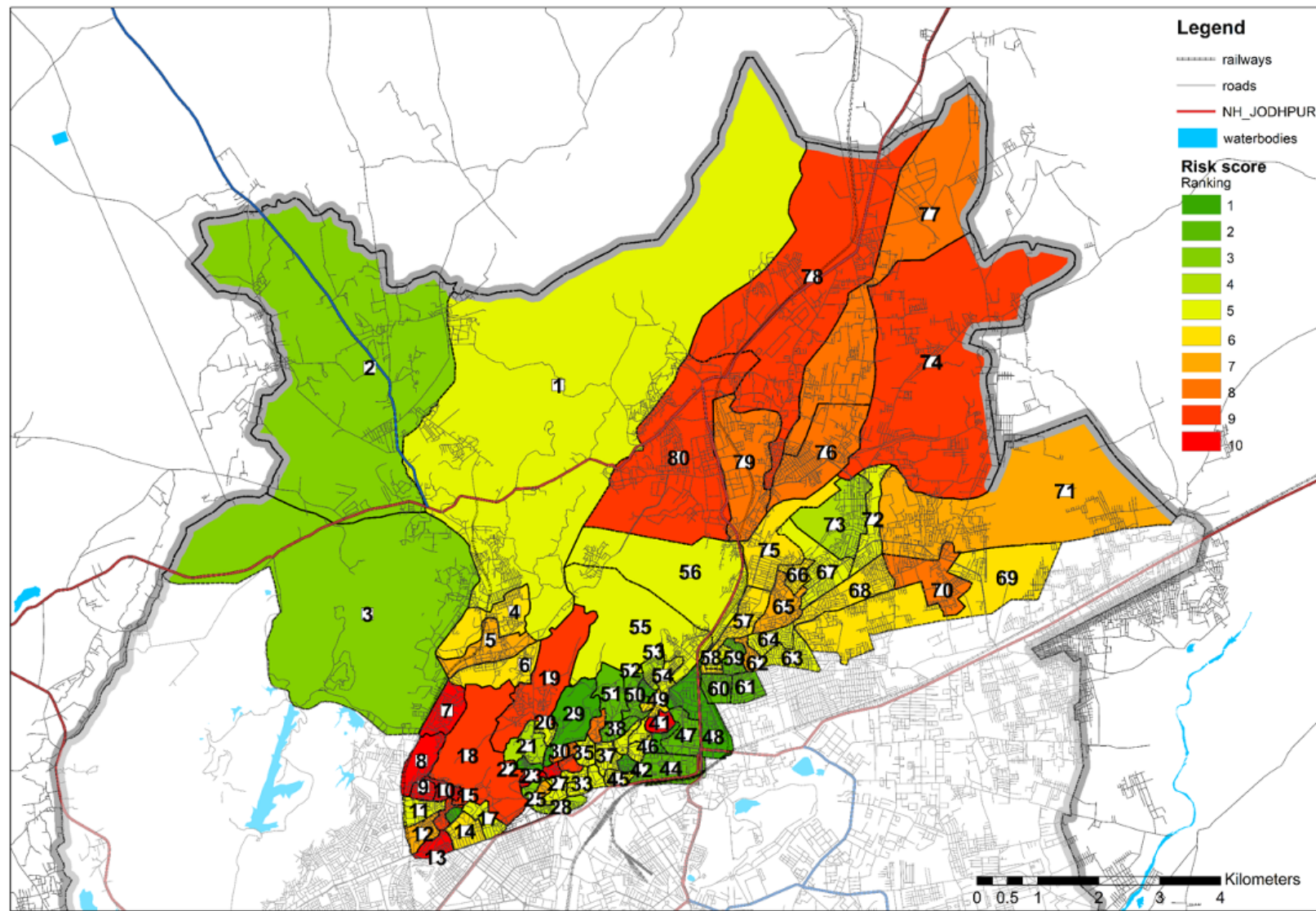
# Sensitivity



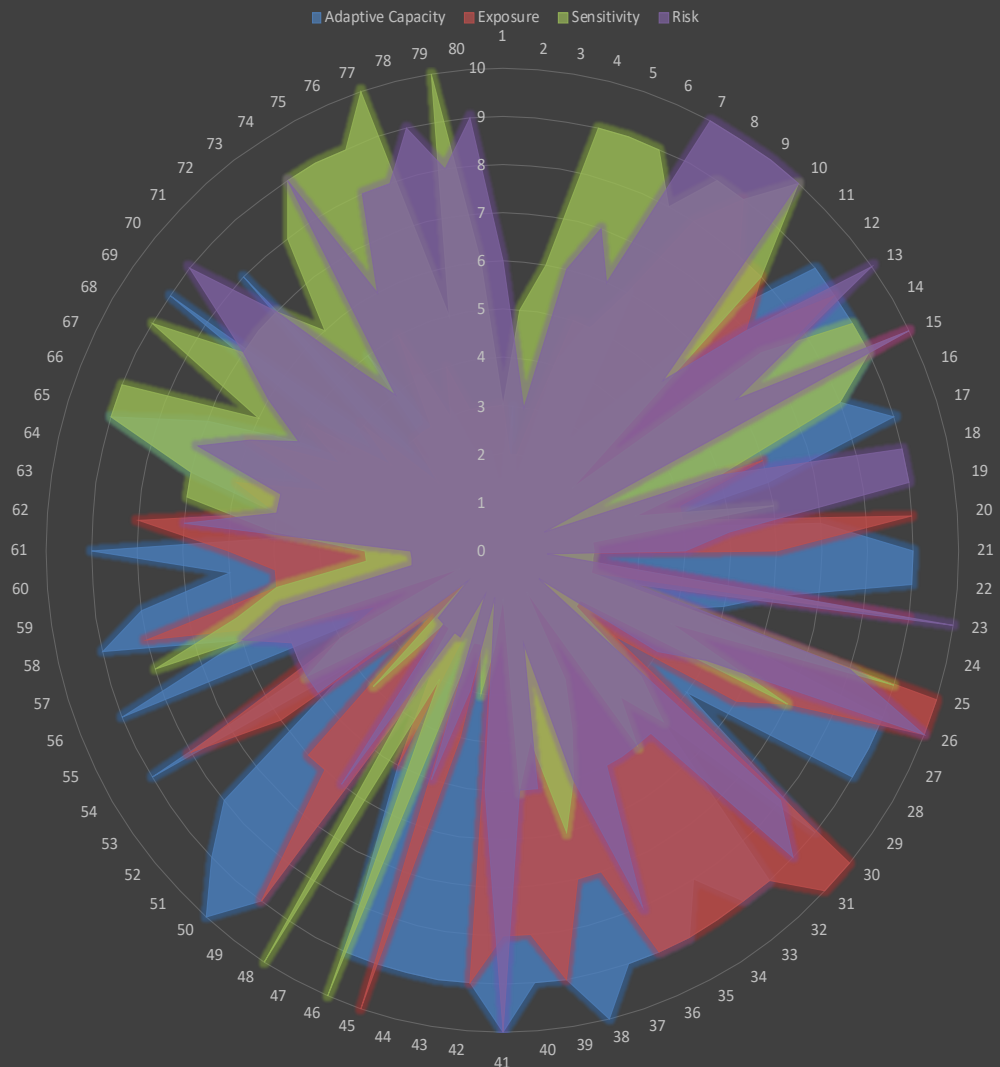
## Adaptive Capacity



# Vulnerability



Ward Wise Variation in Factor Scores for different components of Heat Wave Risk



**Thanks**

Abhiyant Tiwari

[atiwari@nrdcindia.org](mailto:atiwari@nrdcindia.org)